



The **X630i** digital corrugated press



The efficient business model for single pass corrugated printing

Why digital?

Digital printing's greatest strength is its efficiency, which allows for faster turnaround times and adapts quickly to market trends and disruptions.

Brand owners are constantly under pressure from a demanding market that faces multiple challenges simultaneously: to develop new products and varieties to stay competitive. There is a growing demand for customised packaging and variable data printing for security in conjunction with the growth of online e-commerce. There is a high degree of pressure to reduce time, waste, and disruption in the supply chain in order to obtain printing materials, as well as a lower offer of skilled workers.

In this scenario, investing in the right technology is key to maximising productivity, speeding up production time, and reducing costs.

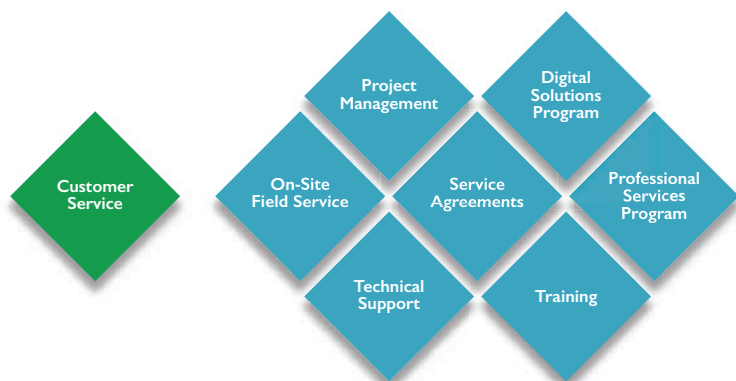
New market opportunities: The **X630i** allows for package personalisation, seasonal promotions, as well as what the customer wants and when they want it. Being able to print multiple SKUs in an hour to adapt better to market trends with high-quality graphics and, using a wider creative gamut than traditional processes.

Why Domino?

With over 40 years of experience, with a legacy in inkjet technology, Domino has an established global reputation for providing proven and reliable digital printing solutions.

Through a global network of 29 subsidiary offices and in excess of 200 distributors, the Domino Group operates in over 120 countries employing over 3,000 people worldwide with manufacturing facilities situated in the UK, China, Germany, India, Switzerland, Sweden, and the USA. Since June 2015, Domino's parent company is Brother Corporation.

Our global support services range from workflow integration to advanced operation training. We are by your side to guide you, tailor our solutions to your business needs and train your engineers. It is important that our customers know that we are by their side to support them.



"Digital printing has revolutionised and changed the way we are doing business, the way we represent our brand and the way we serve our customers."

"Transitioning to digital has opened up many doors and allowed us to not only service the large customers that we always have dealt with but also opened the opportunity for maybe smaller customers that don't have the ability to run large print runs."

Steve Jones, Vice President of Consumer Sales at Rev-A-Shelf



Reduced lead time and waste: quicker setup, just-in-time production, and faster turn-around to reduce inventory and time in the supply chain. Produce what is required when is needed and in the quantities requested. It requires less material to make ready a job, therefore less waste which contributes positively to the sustainability footprint.

Reduced cost: a reduction in plate usage and other costs associated with conventional printing such as ink, electricity, and waste.



Greener Credentials

Domino is committed to minimising the consumption of natural resources and energy and the creation of waste. Our ink jet printers are RoHS and WEEE compliant so they are recyclable.

X630i

The **X630i** requires no plates, no associated materials required for washdown purposes and minimal set-up waste. It consumes less energy than competing products during operation, and uses our unique **AQ95** water based inkset, with no additional priming or bonding agent and due to the outstanding mechanical properties it also does not require over-varnishing.

But most of all, digital printing changes your business model and provides the capability to 'print-on-demand' resulting in less over-printing and reduced storage requirements, limiting the amount of waste created due to obsolescence as well as in the production process.

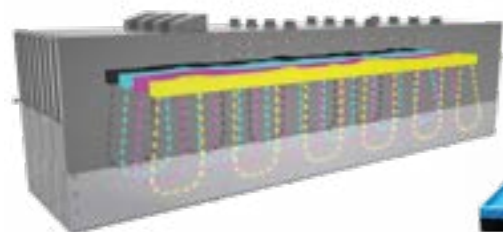
Take a closer look inside the **X630i**

intelligent Technology

i-Tech components combine to create a system altogether more flexible and reliable.

i-Tech ActiFlow¹

Ink circulation provides consistent print results and the optimum reliability – maintains a constant temperature and removes micro air bubbles enhancing ink jetting stability.



i-Tech CleanCap²

Automated print head cleaning and capping ensures the highest productivity – print heads are cleaned and ready for production within minutes. Less manual cleaning reduces the risk of damage.



i-Tech StitchLink³

Micro-motor controllers precisely align each print head – creating a seamless image across the corrugated sheet to deliver the high print quality results.



Near Infrared Dryer⁴

Even with coated corrugated materials, it consumes less energy than competing products during operation.

Stacker

Alternative stacker solutions can be deployed to meet your requirements for automation and budget.

Board Cleaning⁵

We use a patented sheet cleaner to prepare the top surface for print direct to the surface. This process uses ion charging and an ion vacuum to ensure that the sheet is free from contaminants.

Lead Edge Feeding System⁶

Fully automated, servo driven, continuous bottom feeding system. Automated setup for sheet sizes and caliper, vacuum assist, stores jobs and sheet sizes for quick setup. Can feed E to BC flute sizes.

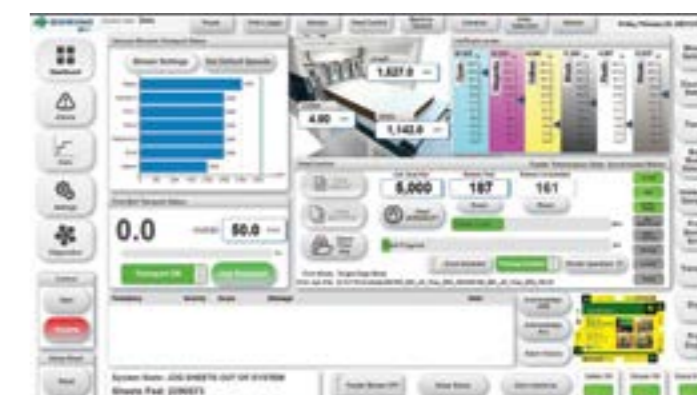
Domino Generation 6 Ink Jet System⁷

The proprietary ink jet system design, based on 600dpi Kyocera print heads, delivers more consistent print results and higher reliability than other alternatives.

- ◆ 4 colour CMYK
- ◆ AQ95 aqueous inks
- ◆ 600 x 600dpi print resolution
- ◆ Print area: 3,000mm x 1,345mm (118" x 53")

Board Inspection⁸

User Friendly HMI⁹

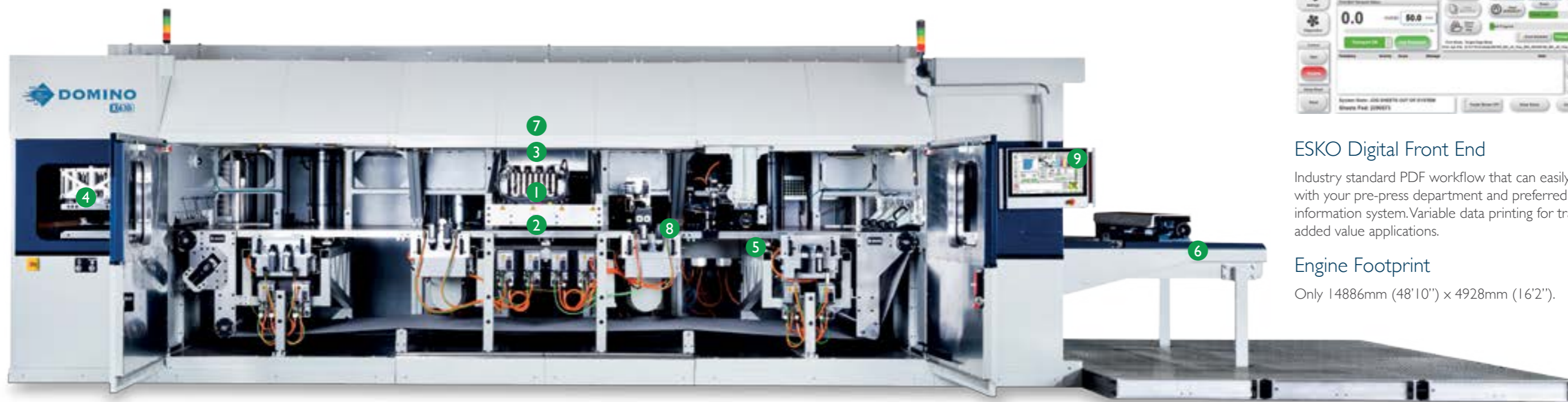


ESKO Digital Front End

Industry standard PDF workflow that can easily integrate with your pre-press department and preferred management information system. Variable data printing for traceability and added value applications.

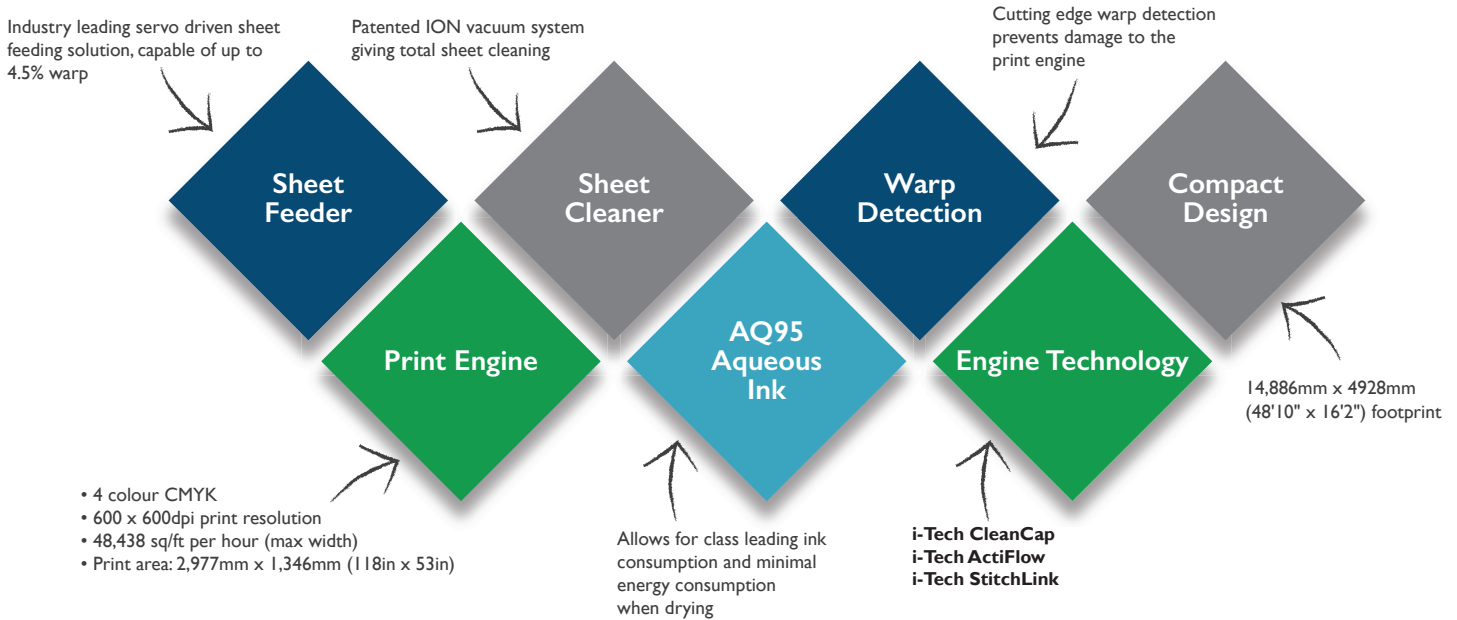
Engine Footprint

Only 14886mm (48'10") x 4928mm (16'2").



Why the X630i?

The Domino **X630i** single pass digital press will enable corrugated converters, to profitably develop short and medium-run market opportunities, facilitating new streams of business and providing a more complete range of capabilities for their customer base.



Why the ink? what's the relevance of the aqueous-based vs UV ink?

The sustainable ink that produces more

As part of its specially formulated ink formulation, Domino **AQ95** water-based inks contain **i-Tech PolyM**, a micro polymeric particle component that ensures reliable printing on both **coated** and **uncoated** corrugated board types.

These inks eliminate the need for primers and separate bonding agents, reducing the complexity and cost associated with other water-based inks.

Our digital inkjet aqueous inks are suitable for **non-direct food packaging applications**.



Technical Specification

X630i

Press Modules

- Feeder
- Transfer In
- Board Cleaning
- Board Inspection
- Print Section
- Transfer Out
- Dryer
- Overprint Varnish station

Technology

- Piezo Drop on Demand ink jet
- Infrared drying

Printing Speed

- 50m/min (164ft/min)
- 75m/min (246ft/min)

Image Resolution

- 600dpi native plus 3 greyscales

Media-Sheet Size Range

508 x 762 to 1,600 x 3000mm
(20 x 30 to 63 x 118 inch)

Image Format

Maximum Print Area 3000mm
(118") x 1345mm (53")

Media Type

- Coated, Uncoated & Kraft
- Sheet caliper: E to BC fluted corrugated

Inks

- Cyan, Magenta, Yellow, Black
- Aqueous Inks

Workflow

- Esko DFE
- Colour Pilot
- Domino ScreenPro HS
- Step and repeat, colour management, cropping, edge to edge printing, saturation control, and hot folders

File Formats

PDF Versions: 1.3; 1.4; 1.5; 1.6; 2.0; PDF/X-1a or PDF/X-3 and PDF/VT

Environment

The **X630i** is self-enclosed with temperature and dust control

Press Dimensions

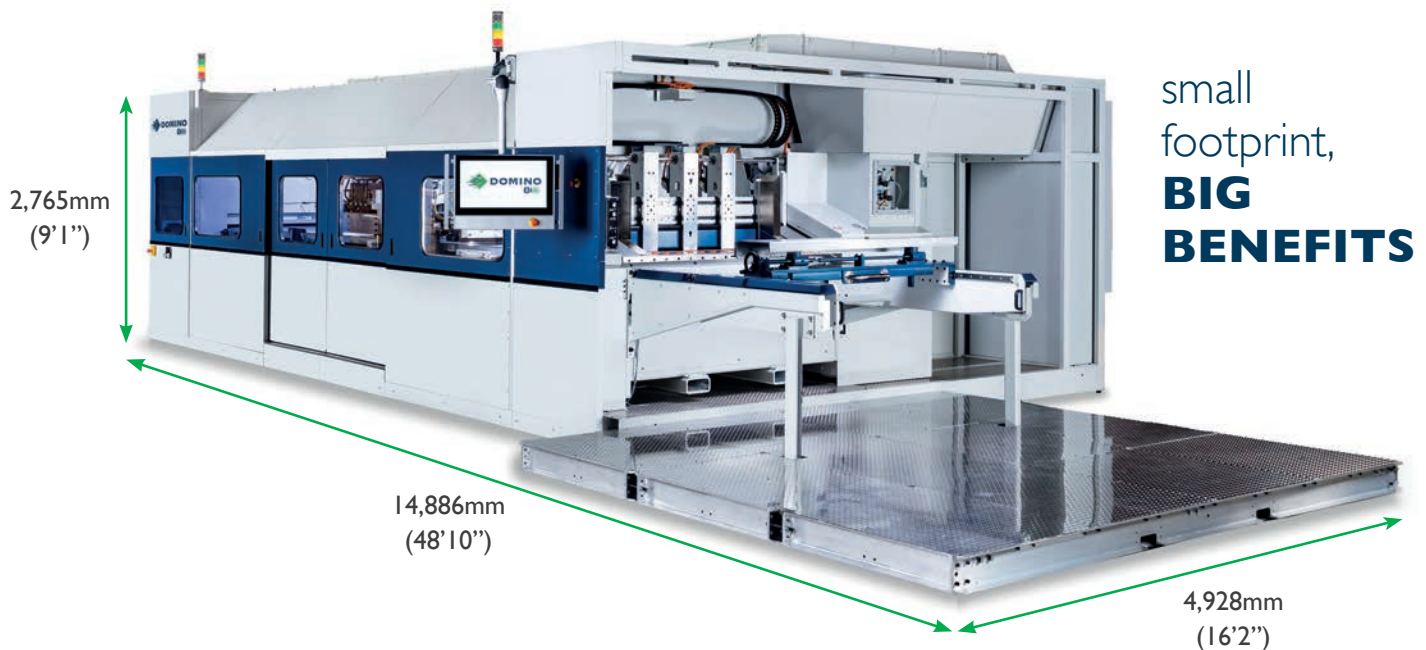
- Length 14,886mm (48'10")
- Width 4,928mm (16'2")
- Height 2,765mm (9'1")
- See Floor Plan Drawing for details

Weight

- Feeder: 5000kg (11,023lbs)
- Transfer In: 5455kg (12,026lbs)
- Print Section: 7273kg (16,034lbs)
- Transfer Out: 5000kg (11,023lbs)
- Dryer: 3636kg (8,016lbs)
- Overprint Varnish Station: 1814kg (4000lbs)
- Total: 28178kg (62,122lbs)

Services

- Electrical: 440-480 VAC /60Hz/3 Phase
- Air: 100psi (8.0 Bar) minimum for actuators (minimal SCFM/Airflow required)
No continuous-flow air-operated devices used
- Water: No water supplier required
- Drain: Required for HVAC unit condensate



TALK TO AN EXPERT

Contact details: enquiries@domino-uk.com
Telephone: +44 1954 782 056
Website: www.domino-printing.com

