



# Adelholzener takes advantage of the new D-Series **i-Tech** generation of lasers from Domino



## Overview

The mineral water company Adelholzener Alpenquellen, based in the Bavarian Alps and completely under monastery ownership, produces healing water, mineral water and soft drinks under the brand names Adelholzener and Active O2. The seven bottling lines can fill around 240,000 bottles per hour.

*“Over 14 years we have established a trusting and reliable partnership and, as a result, we were more than willing to consider the new D-Series **i-Tech** laser systems”,*

*Rudolf Kropf, Head of Electrical Engineering.*

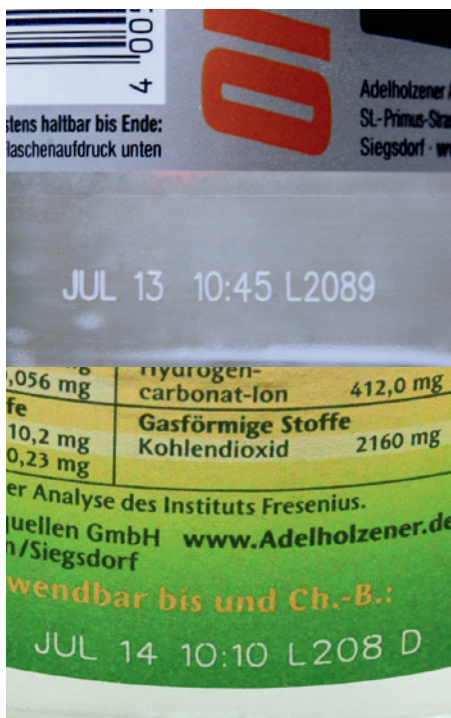


## Fast Facts

- Creation of high-quality codes, even on high-speed bottling lines and labelling systems
- Industry-leading and consistent code quality on a variety of substrates
- Established and trusting partnership for 14 years
- Easy integration and system compatibility
- Up to 60,000 bottles per hour
- Advance sample creation under production conditions in laser competence centre

Domino. Do more.

“The test results created in the sample laboratory at the Domino laser competence centre for coding on the metallic labels under realistic conditions convinced us of the performance capacity of the **i-Tech** generation of lasers, especially the **D620i** laser coder, and thereby influenced our investment decision...”



### State-of-the-art technology for maximum quality

The company's brands are characterised by high-quality and consistent innovation. This is also reflected in the marking equipment required for product traceability.

The first Domino laser was bought back in 1998 through plant manufacturer Krones and, since then, has led to a trusting relationship over the intervening 14 years.

Due to negative experiences with existing lasers at that time, they opted for Domino laser systems to meet the varied marking requirements during bottling.

Adelholzener Alpenquellen utilises the latest technology in all areas of production. As their existing laser systems were getting old and Domino had launched a new generation of lasers

with its D-Series **i-Tech**, they decided to invest in the latest laser technology from Domino.

The new lasers reduce maintenance expenses, save costs and increase the efficiency of the production lines as well as simplifying integration thanks to their compact design.

### Essential system compatibility - **D320i** and **D620i** laser coders for labelling and PET direct marking

For marking paper labels on the glue pallet as well as for PET direct marking on the bottle carousel, the company invested in both the **D320i** IP 65 (30 Watt) and the **D620i** IP 65 (60 Watt) laser coders.

A key advantage of both laser models is that they fit in the existing laser head brackets, so that switching from the **D320i** to the **D620i** or vice-versa is not a problem. The modular design of the laser systems also offers maximum flexibility in terms of integration.

The decision to invest in the **D620i** IP 65 (60 Watt) laser was partly due to the marking capacity required on the glue pallet (up to 60,000 bottles/h) as well as the complex substrate of the metallic labels that need to be marked.

“The test results created in the sample laboratory at the Domino laser competence centre for coding on the metallic labels under realistic conditions convinced us of the performance capacity of the **i-Tech** generation of lasers, especially the **D620i** laser coder; and thereby influenced our investment decision”, explains Rudolf Kropf, Head of Electrical Engineering at Adelholzener Alpenquellen.

One of the two **D620i** IP 65 laser coders is used in a Krones Solomatic for marking labels for re-usable PET bottles on the glue pallet. The paper labels are marked with the best before date, production code and time before they are applied to the bottles.

The second **D620i** IP 65 laser, which is integrated in a Krones Topmatic labelling system, codes metallic labels for re-usable glass bottles on the glue pallet, whereas the **D320i** IP65, integrated in a Krones Contiroll system, marks the innovative ActiveO2 PET bottles with the required filling information directly beneath the bottle label.

A further **D320i** laser coder has recently been installed on another line, and the company decided to order an additional **D620i** system for a completely new line which commenced operation in autumn 2012.

All laser coders are controlled by Domino's intuitive, external **TouchPanel**. The simplified **QuickStep** user interface provides effortless operation and status requests, thereby requiring minimum operator intervention.

In addition, the company also opted for a backup system, which can be used on all bottling lines, whether in the PET or glass bottle filling station.

This guarantees maximum production reliability and effectiveness during the bottling process.

“Over 14 years we have established a trusting and reliable partnership and, as a result, we were more than willing to consider the new D-Series **i-Tech** laser systems. We also value our relationship with the service technician who looks after us, is close to our site and represents a direct and excellent point of contact”, concludes Rudolf Kropf.

