

Editor[®] Starlight ink jet controller

Variable data printing and control made easy



Unique printed products that
add value to your business

Added value applications for variable data printing

This new platform uses an intuitive Windows Embedded Standard graphical user interface that your operators will find so easy to use. **Editor® Starlight** supports the in-line ink jet printing of 2D codes, barcodes, numbering, addressing and personalisation.

Supporting the Domino **K600i** ink jet printers, it combines ease of operation with modular machine control capability.

User friendly and intuitive

The layout editor enables job layouts to be easily designed using images, text, barcodes and other variable fields. The true WYSIWYG layout ensures what is on the screen is a true representation of the final image.

Being fully Unicode compliant, **Editor® Starlight** accepts all common industry standard data files including Text Files, BMP, CSV, DBF and JPG. A single page PDF can be used as a background template image for inserting variable fields for variable data printing (VDP).

Configuring addresses, removing empty lines, adding a barcode or data matrix code from the vast library of industry standard codes is easy, just through selecting and dropping into the layout.

Jobs can be previewed on screen quickly or printed using an offline printer. There is a Quality Copy function that allows key personnel to take a quality sample of the production batch as required.

Data verification

Print Confirmation is a standard feature with the **Editor® Starlight** controller. This function provides extra security by confirming data sequences being printed. With every message printed, the printer confirms to the **Editor® Starlight** that a print function has occurred, and that the print sequence is as expected.



The 'Mark-Done' feature marks each data record after printing for post-production reconciliation. This helps ensure no duplicate records are printed providing added security for gaming and security printing applications.

For a more secure solution, or where multiple pre-personalised items need to be matched to form one product, a vision system can be employed. The system then has the ability to Read and Print for matching personalisation and/or Print and Verify. If an error is identified, the **Editor® Starlight** can stop or divert products as appropriate. This function can be based on just a simple barcode reader, or even a sophisticated camera system, depending on the application requirement.

Reporting

Provides production data and statistics. Includes both error and data integrity log files to verify that all data has been produced without errors.



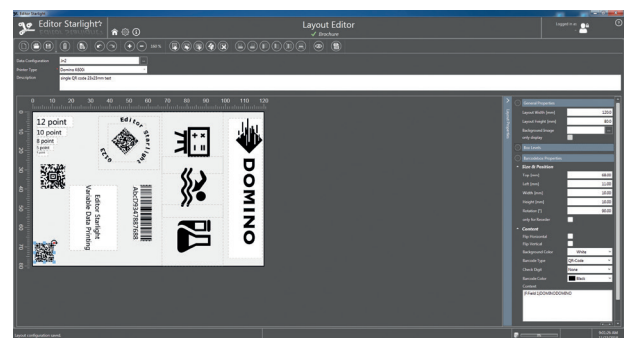
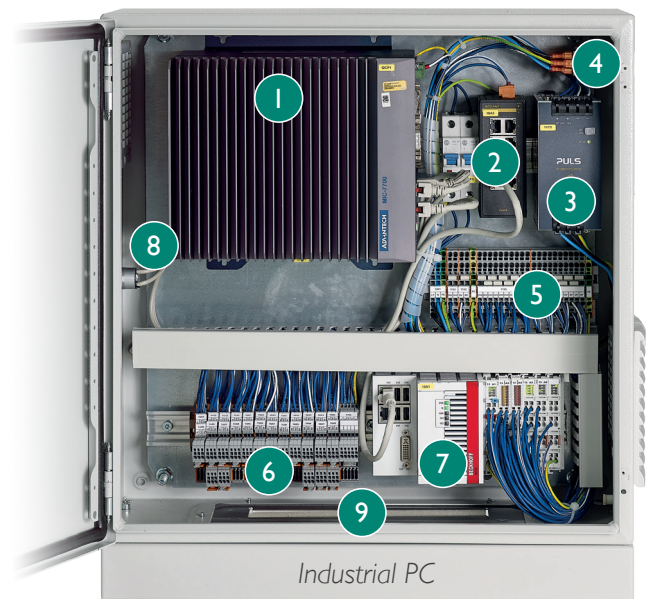
Greener credentials

Domino's commitment and investment in sound environmental practices means we frequently exceed the demanding governmental, industry and company standards and regulations. We are committed to minimising the consumption of natural resources and energy and the creation of waste. Additionally, our products are RoHS and WEEE compliant so that they are recyclable.

A quick tour around the Editor® Starlight

Key to illustration

- | | |
|----------------------|----------------------------------------|
| 1. Industrial PC | 6. Starlight Connection Rail to I/O |
| 2. Network Switch | 7. PLC* (Not included in Data Spooler) |
| 3. 24v Power supply | 8. USB connectors |
| 4. Input mains power | 9. Cable access entry point |
| 5. Interconnect Rail | |



User Interface

Why use Editor® Starlight?

The new Editor® Starlight ink jet controller is the next generation in the development of the Editor™ GT controller range from Domino. With over 2500 installations worldwide, the Editor™ GT is the proven and reliable solution for the label and security printing, mailing, ticket & tags, lottery and gaming market sectors.

- ◆ **Intuitive** – Fully WYSIWYG Graphical User Interface
- ◆ **Ease of Use** - Enhanced editing functionality, (rotating text/ barcodes, fully resizable codes)
- ◆ **Enhanced Access Security** – Configurable password protected access control
- ◆ **Enhanced Data Security** – from simple print configuration to integration with vision system
- ◆ **Flexible** – Accepts all standard file formats and multi-language/Unicode requirements are supported. Tools to create a range of different numbering sequences to match different job requirements
- ◆ **Future Proof** – Regular updates to barcodes/graphics library can be implemented and immediately be printed. (e.g. printers do not require a software update)
- ◆ **Productivity** – The production screen is designed to give operators continuous visibility of production line status, highlighting key production, current job statistics, status, line speeds and calculated completion time
- ◆ **Control** – Full PLC control, allowing product tracking and configurable hardware signals to be available to control multiple production line peripherals

Technical Specification

Editor® Starlight

Hardware options

- Industrial PC built into floor standing cabinet, IP 66 (NEMA 4) rated, with 610mm (24") wide screen monitor; 1920x1080 pixels
- 500mm (L) x 555mm (H) x 218mm (W) (19.6" (L) x 21.8" (H) x 8.5"(W))

Floor Standing Controller dimensions

- 674mm/26.5"(L) x 1641mm/64.6"(H) x 519mm/20.4"(W)

PC

- Multi-core i7 PC, including Windows 10 IoT
- USB Support
- Network ready
- Interface compatible for readers and scanners
- 115/240 VAC 50/60 Hz

Input/Output

- 1 backlash compensated encoder input (Option)
- K600i printer driver (Option)
- Up to 8 outputs for periphery; stacker, gate, ink jet, UV, etc. (Option)
- Up to 8 inputs for periphery; product detect, sync point, etc. (Option)
- Analogue outputs for UV dryer integration (Option)

*When no Input and Output option is selected, Encoder and Print-Go are supported through K600i Printer

Data Formats

- Flat Files
- Fixed length records
- CSV
- DBF files
- Full Unicode support

Printer Support

- Domino K600i printer – Single and Dual Bar Options

Control/support (Option)

- Full PLC control for all commonly used production line peripherals, such as:
 - Beacons (Option)
 - Alarms (Option)
 - Line stop (Option)
 - Exit Conveyors (Option)

*When no Input and Output option is selected, Encoder and Print-Go are supported through K600i Printer only.

