

Mx-Series Consumables

When having a readable label on your products and packages matters

Not all print and apply labels, ribbons and thermal printheads are the same. Domino consumables are manufactured to deliver optimum performance with our printers. This enables you to get the most from your coding equipment – with no compromise and no costly surprises.



When reduced downtime matters

Domino labels and ribbons have been manufactured to deliver optimum performance with our printers, ensuring you get consistently good prints on every pack, at an optimised running cost, and with minimal downtime.

Labels

- ◆ Variety of adhesives to meet most application requirements.
- ◆ Label length matches ribbon length to minimise operator intervention and downtime.
- ◆ High quality die cut labels for optimum feed and application results.

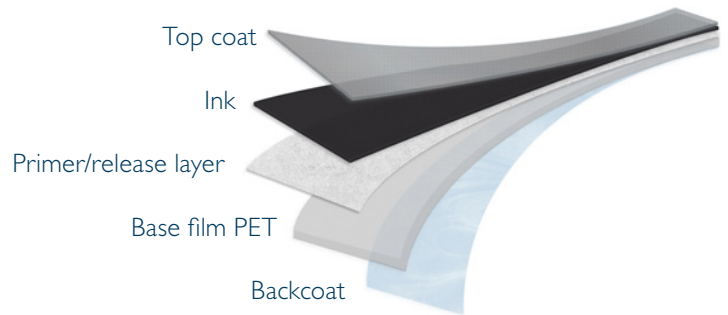
Material	Description	Comments
Vellum	Uncoated material	Most common label type
Semi Gloss	Coated material	Higher quality label with good rub resistance
Direct Thermal	Thermal matt paper	Short life - no ribbon required
Synthetics	PET, PE, PP	More durable than paper labels

The offered range of labels may vary from country to country. Please contact your local Domino representative or technician for more information.



Ribbons

- ◆ The high-strength construction of Domino ribbons minimises downtime caused by ribbon breaks.
- ◆ The advanced low-friction back coating helps to reduce wear and static build up, allowing your printheads to print for longer.



Ribbon type	Description	Domino grade	Heat resistance	Printing speed	Print density	Rub resistance	Colours available
Wax	Versatile wax	W2	◆	◆◆◆	◆◆	◆	No
Wax	Solvent-free wax	W3	◆	◆◆◆	◆◆◆	◆	No
Wax	Higher contrast wax	W4	◆	◆◆◆	◆◆	◆	No
Wax	Entry-level wax	W5	◆	◆◆◆	◆◆	◆	No
Wax/Resin	Versatile wax-resin	WR2	◆◆	◆◆◆	◆◆	◆◆	Yes
Wax/Resin	Premium wax-resin	WR4	◆◆	◆◆◆	◆◆	◆◆	No
Wax/Resin	Entry-level wax-resin	WR5	◆	◆◆	◆◆	◆◆	No
Resin	Versatile resin	R1	◆◆	◆◆	◆	◆◆◆	No
Resin	Entry-level resin	R5	◆◆◆	◆	◆	◆◆◆	No

◆ Good ◆◆ Excellent ◆◆◆ Superior

The offered range of ribbons may vary from country to country. Please contact your local Domino representative or technician for more information.

Secure peace of mind

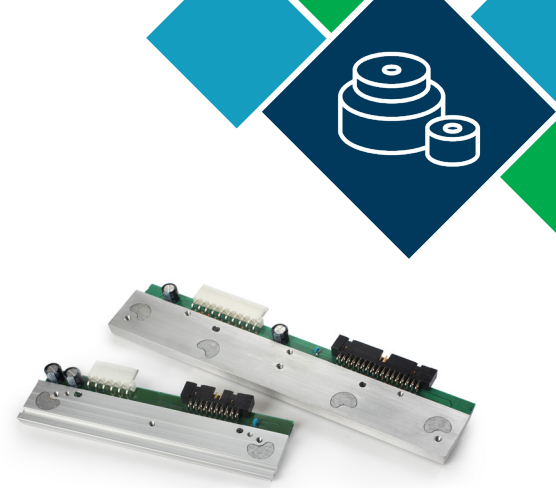
Our ribbons are produced under ISO9001, ISO14001, and OHSAS 18001 process certification, and are fully compliant with REACH, RoHS, and WEEE regulations; further certifications and regulatory statements can be provided upon request.



When a good code matters

Domino thermal printheads have been designed to work optimally with your printing system. The innovative design delivers high print energy and allows for easy movement of ribbon, achieving a quick thermal response and outstanding print performance.

All Domino thermal printheads are offered with extended warranty, adding security to your investment. The use of Domino thermal printheads in conjunction with Domino ribbons will provide superior print quality, less downtime, and lower running costs.



How to handle, use, and store your ribbons

Thermal transfer ribbons are sensitive to storage conditions and manipulations. Some care must be taken to avoid invisible damage to the ribbon that could affect the print quality or disrupt the print engine. Following the guidance below will help ensure optimal performance of your printing system.



Box handling

Handle your ribbon box with care, rough handling may cause strong shocks between ribbons, resulting in invisible damage that can alter their mechanical behaviour in the printer.



Opening the box

Avoid using sharp objects such as box cutters when opening ribbons, even very slight damage to the edge of a ribbon will compromise its use.



Temperature

Storage temperature should be between 5°C (41°F) and 35°C (95°F). High temperatures can cause ink to stick to the film, resulting in missing prints and printhead damage. Ribbons stored below 5°C should be left at room temperature for 48 hours before use to avoid issues.



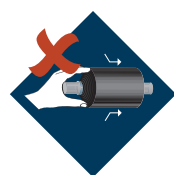
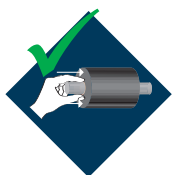
Humidity

Keep the ribbons at a humidity rate between 20% and 80%. Storing ribbons in contact with water, or in a humid environment, can affect the ribbon's mechanical behaviour in the printer, leading to downtime.



Sunlight

Avoid exposure to direct sunlight and sources of heat, and keep away from open windows.



Loading ribbons

When loading a ribbon on the shaft, make sure you press on the core rather than on the film. Putting pressure on the ribbon can cause it to progressively unwind and may affect the positioning of the film during printing and stop the printing process.

How to recycle and dispose

Are you unsure of what to do with your used ribbons and associated packaging once you are finished with them? At Domino, we know how important environmental protection and sustainable waste management is to our customers, so we want to make it easy for you to dispose of your used ribbons in the most responsible way possible.

To help with this we have developed the following table to provide information on the best method of disposal for each component of our ribbons and associated packaging.



Component	 Re-usable	 Recyclable	 Incinerable	 Decomposable	 Common industrial waste
TT film	-	-	✓	-	✓
Cardboard core	✓ as take-up core	✓ with cardboard 	✓	✓ but better to recycle	✓
Plastic core	✓ as take-up core	✓ with the same type of plastics 	✓	-	✓
Leader	-	-	✓	-	✓
Trailer	-	-	✓	-	✓
Roll packaging film	-	✓ with the same type of plastics 	✓	-	✓
Roll label	-	-	✓	-	✓
Cardboard box	✓	✓ with cardboard 	✓	✓ but better to recycle	✓
Filler	✓ as new filler	✓ with cardboard 	✓	✓ but better to recycle	✓
Strapping bands	-	-	✓	-	✓
Box label	-	-	✓	-	✓
Overpacking box	✓	✓ with cardboard 	✓	✓ but better to recycle	✓
Pallet	✓	✓ 	✓	-	✓
Insert sheet	✓	✓ with cardboard 	✓	✓ but better to recycle	✓
Shrink film	-	✓ with the same type of plastics 	✓	-	✓
Pallet label	-	-	✓	-	✓

These indications are based on our knowledge on European regulations.

Common Industrial Waste is defined in the European directive 2008/98/EC. According to the European Waste Catalogue, set by Directive 2000/532/EC, the waste code for Thermal Transfer ribbons is 20 01 39, corresponding to "Plastics" in the chapter "municipal wastes (household waste and similar commercial, industrial and institutional wastes) including separately collected fractions". If the film is not separated from the rest of the roll, the code for the used roll is 20 03 01, corresponding to "mixed municipal wastes" in the chapter "municipal wastes (household waste and similar commercial, industrial and institutional wastes) including separately collected fractions". Please check your local regulations on wastes in case of doubt.



TALK TO AN EXPERT

☎ +44 1954 782 056

✉ enquiries@domino-uk.com

🌐 www.domino-printing.com

www.domino-printing.com