



The V120i thermal transfer printer

Saving you time and money



The cost-effective,
adaptable printing solution
for flexible packaging.



Scan the code to find
out more about V-Series

Domino. Do more.

A quick tour around the VI20i

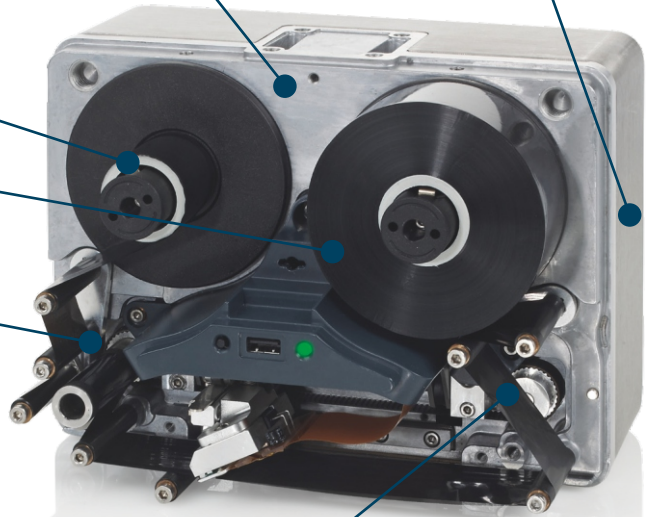
i-Tech Ribbon Drive reduces ribbon use by up to 60%

770m ribbon rolls for long production runs, with effective length of up to 1925m when Economy Mode is used.

Proven 'Dancing Arm' technology ensures no ribbon break-related downtime

Continuous and Intermittent Mode functionality in same printer – suitable for all applications

USB and Ethernet connectivity



Unique ribbon loading system for simple and quick changeovers

A range of user interface options to suit your needs:

5.7" Portable *TouchPad* with *QuickStep* interface - quick connection via USB allows sharing between printers and safe storage

10.4" *TouchPanel* with *QuickStep* interface - control one or more networked printers; IP65 rated to withstand harsh environments

QuickStep includes Built in Label Creation capability to design messages line-side at no extra cost

Use an alternative PC based interface and our *QuickStep* App to reduce cost and complexity on your production line



Domino. Do more.

The affordable, advanced solution for small, high-quality product codes.

Digital thermal transfer coding with the **VI20i** offers you superior print quality, profitability and lower running costs.

Even against comparable thermal transfer coders our revolutionary new **i-Tech** Ribbon Drive uses up to 60% less ribbon.

Combined with easy installation, versatility and reliable performance, renowned global support from Domino makes **VI20i** the perfect choice for both manufacturers and packaging machinery OEMs.

A diverse range of applications

Domino's **VI20i** printer is ideal for goods packed using VFFS, HFFS machines and labellers, across wide-ranging food and healthcare applications.



Variable data with no manual set up



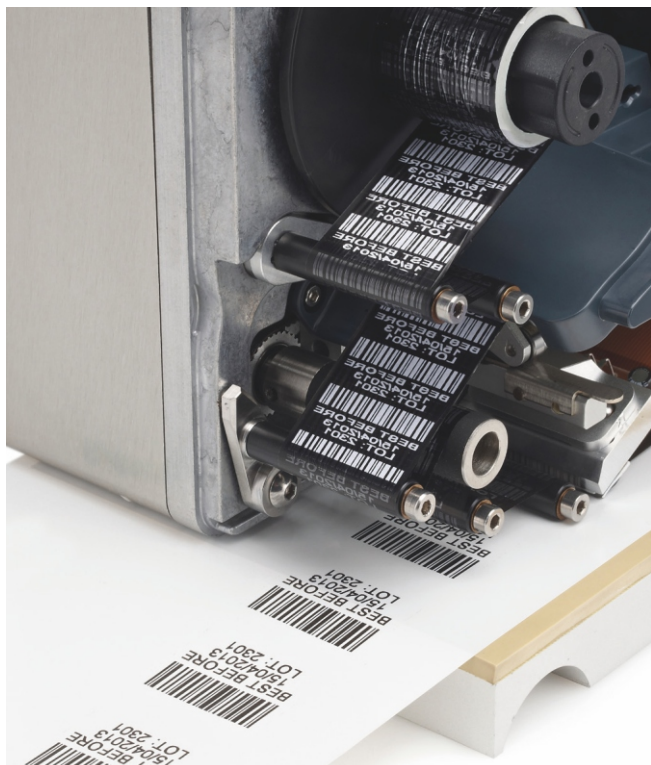
Print alpha numeric text and logos over a large area



Simple creation of codes using a variety of character sets



Clear, high resolution codes every time



Greener credentials

Domino is committed to sound environmental practices and minimising the consumption of natural resources and energy and the creation of waste. We invest in our supply chain to ensure good social and environmental practice and we are supportive of developments to improve corporate accountability. Wherever practical, our products are RoHS and WEEE compliant.

VI20i

Innovative design has enabled a 50% reduction in weight (compared to previous models), helping to minimise environmental impact. Moreover, by enabling you to use up to 60% less ribbon and no compressed air, the Domino **VI20i** also helps you to reduce your carbon footprint.

Going digital means sharp coding and greater profitability

Versatile

Our 300dpi resolution digital print head can print logos as well as text over a wide area offering greater coding capability. It guarantees a consistent readable code every time, compared to typeface that becomes worn through the high impact of hotstamp.



Real time

A real time clock allows variable data such as date and time information to be updated automatically between prints with no manual intervention, minimising the risk of costly coding errors.

Quick and easy to install

Compact

The **VI20i** is compact, allowing it to fit simply into many existing coding spaces. A small power supply, few cable connections and the opportunity to control many printers from one interface makes for a quick and simple installation.



Smart

AutoAlign, our unique (patent applied for) head control technology, simplifies installation by automatically aligning the print head to the optimum position at the touch of a button – without the need for shims or tools.

It also controls the print head electronically, eliminating the need for compressed air.



Quick

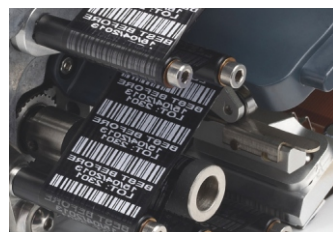
WYSIWYG selection of electronically stored messages ensures quick, error free job changes.



Lowest running costs – thanks to the **i-Tech** Ribbon Drive

Economical

Domino's **i-Tech** Ribbon Drive offers 4 ribbon save settings including 'Economy Mode' which allows you to use up to 60% less ribbon per print – without affecting print quality. As well as reducing ribbon costs this increases the effective ribbon roll length, significantly reducing costs associated with ribbon changeovers.



Reliable

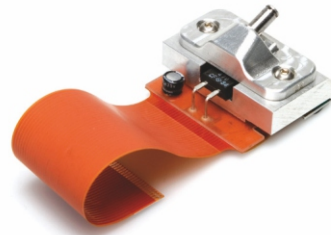
Downtime caused by ribbon breaks is virtually eliminated by **i-Tech's** unique Dancing Arms, which constantly maintain ribbon tension. Additionally, the system does not need compressed air, further improving reliability and reducing running costs.

Performance to match your application

Configurable

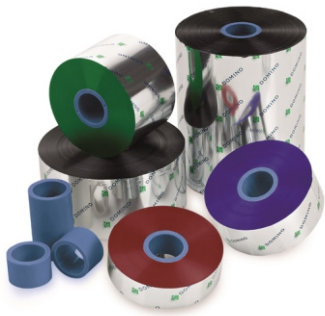
Intermittent or Continuous Mode is offered in the same unit, which can quickly convert between Left and Right handing to be ready to fit all applications.

You do not need a dedicated controller – use any PC based interface with the **VI20i**, including a host packaging machine interface, to meet the needs of your application.



Versatile

The **VI20i** can print from low to high speeds (10-750mm/sec). The integrated print head heater ensures consistent code quality, even at low operating temperatures.



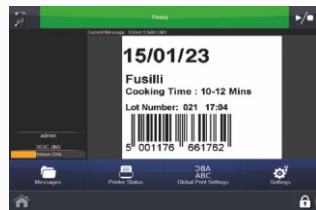
Ribbons

Full range of Domino approved ribbons that comply with latest legislative and environmental standards.

Easy to use

QuickStep User Interface - no action is more than 3 taps away

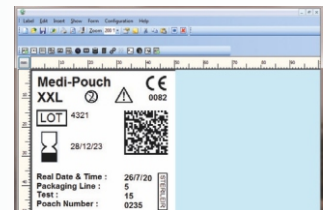
QuickStep is our unique, simplified operator interface that gets the printer in action as quickly as possible. No complex menus or parameters, just enter the job and away you go.



- Large user friendly icons and customisable home screen for quick access to favourite menus and settings
- Create and edit messages easily using the WYSIWYG drag and drop message editor at the line side
- Intuitive 3-tier menu structure makes **QuickStep** quick to learn and simple to remember
- Simplified Message Store and live WYSIWYG message preview to speed up changeovers and help eliminate coding selection errors

QuickDesign Lite - Simplifying message design

QuickDesign Lite is a single, easy to use Windows® application that gives you the flexibility of creating all types of coding messages from a remote PC. It also lays the foundation for providing increased automation of your coding needs.



- Simply create, edit and send your message to your **VI20i** by network or USB stick
- Simplifies generation of complex messages, including full Unicode character support
- Available for your **VI20i** at no extra cost
- Easily upgradeable to **QuickDesign** for increase connectivity, control and Coding Automation capabilities

Domino. Do more.

Technical Specification:

VI20i

Printer Specification

Printing Modes	Intermittent Mode (IM) and Continuous Mode (CM) in the same printer
Left hand / Right hand	Both options available (convertible with no extra parts in 15 minutes)
Print resolution	300 dpi
Maximum print area (IM)	32mm x 55mm
Maximum print area (CM)	32mm x 500mm
Print speed (max) (IM)	400mm/s*
Speed range (CM)	10 mm/s - 750 mm/s*
Print repeat rate (max)	6 prints/s (with a 10mm long print)*
Ribbon drive technology	i-Tech Ribbon Drive with unique Dancing Arm tension control
Max ribbon length	770m (up to 1925m effective length with Economy Mode)
Standard Ribbon widths	34mm, 22mm

Ribbon save modes*

Economy Mode	Variable in 1% increments up to 60%
Retraction Mode	Less than 1 mm gap between prints
Column Mode	Yes
Stop mid print	Yes

Print features

Date code format	Yes
Offsets	Yes
Shift codes	Yes
Serial number generation	Yes
Fonts	Most true type fonts
Bar codes	Yes
Logos / bitmaps	Yes

Graphical User Interface	QuickStep , full colour Interface Intuitive navigation via, large, easy to read buttons and Icons. WYSIWYG print preview. Multilanguage support
--------------------------	--

Controller options	No dedicated controller required. Options: • Domino TouchPad (5.7") • Domino TouchPanel (10.4") • PC based interface (via Ethernet cable or network)
--------------------	--

Connectivity	Ethernet / USB x 2 / mini USB (service)
Inputs	Print Go, Encoder
Outputs	Error, Ready, Ribbon, Warning, Spare (software configurable volt free contacts)
Special features	Master slave, macros, password, fastmode
Label creation	Onboard and via QuickDesign (PC application included)
Electrical requirements	90v – 264v AC 50/60Hz, OR 24v DC (+/- 2%) at 5A (if direct)
Dimensions	(W) 218.0mm x (H) 160.0mm x (D) 149.5mm
Weight	5.6kg

TouchPad Specification

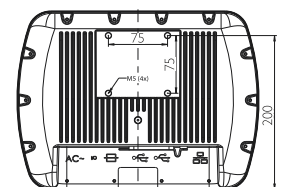
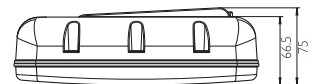
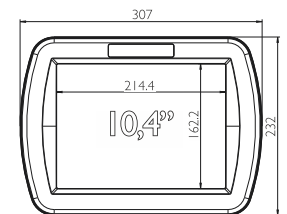
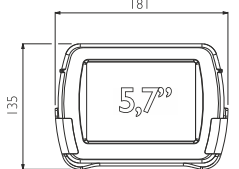
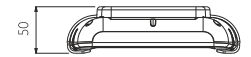
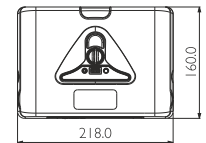
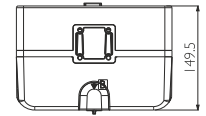
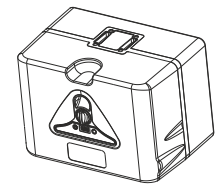
Type	5.7 inch, full colour touchscreen (640x480 resolution). Handheld with docking station included.
Connectivity	USB, Ethernet, Mini USB (for power / data connection to printer)
Dimensions	(W) 173mm x (H) 128mm x (D) 34mm excluding docking station, (W) 181mm x (H) 135mm x (D) 50mm including docking station
Weight	0.4kg

TouchPanel Specification

Type	10.4 inch, full colour touchscreen (800X600 resolution) VESA mountable with optional brackets
I.P. Protection	Certified to IP65
Connectivity	2 x USB, Ethernet
Electrical requirements	100/240 VAC, 50/60 Hz
Dimensions	(W) 307mm x (H) 232mm x (D) 75mm
Weight	2.8kg

PSU Specification

Dimensions	(W) 67 mm x (H) 34 mm x (D) 166 mm
Weight	0.4 Kg
Environmental requirements	Temperature: 5°C to 40°C. Humidity: 20-80%, non condensing



*Note: Capability is dependent upon application and substrate type as well as message length



CONTACT US

TALK TO AN EXPERT

+91-900 900 6612
enquiry@dominoindia.com
www.domino-printing.com



KNOW MORE